An aerial photograph of a large industrial facility, likely a mining and metal processing plant, situated on a riverbank. The facility features large red-roofed buildings, extensive storage areas, and a long pier extending into the water. The surrounding landscape is lush green, and the sky is blue with scattered white clouds.

# LEONE ROCK METAL GROUP

3<sup>rd</sup> Quarter, 2021  
Maiden Edition

# CONTENT

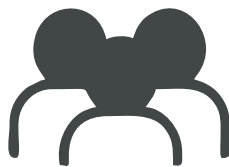
- 01** Company Profile
- 02** Message from CEO
- 03** H.E Bio's Assurance
- 04** Leone Rock President Pledge
- 05** HR Update
- 06** Compliance Update
- 07** Community Update







Total Export  
Over 1 Million  
Tons So Far



+2000  
Employees

95% Sierra Leonean  
Workforce

LE

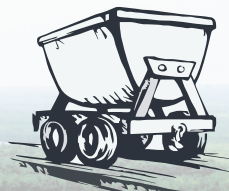
Contribution to  
Government &  
Community 76.48 Billion



Group Investment in  
Sierra Leone  
148.62 M.USD



90% of our suppliers and  
service  
providers are locals



Mining output  
almost 2 million tons

Leone Rock Metal Group Company Limited until recently was known as Kingho Investment Company Limited. It was established in Sierra Leone in July 2010. It is a registered Company in Sierra Leone under the company's Act (Act No.5) of 2009 as a company with registration number **SLE290716KINGH1600235**. The company has its office at 20 New Signal Hill Road, Wilberforce, Freetown, Republic of Sierra Leone.

Leone Rock Metal Group Company Limited ("The Company") is one of the largest resource investment companies in West Africa. The company is parent company of Kingho Mining Company and Kingho Railway & Port Company which are part of an integrated Iron Ore Mining-Railway-Port Handling and export group of companies. The company has its Headquarter in Freetown and its subsidiary group's operations are located primarily in Tonkolili and Port Loko District Respectively. The asset encompasses an open pit Iron Ore Mine and surface operations located in Ferengbeya, Tonkolili and a 192 KM Railway and an integrated train discharge, ore processing and ship loading Port located in Pepel, Northwest Sierra Leone. The Company is the largest Iron Ore producer in Sierra Leone.

Leone Rock Metal Group Company has a corporate culture focused on maximising the core value of its assets and maintaining focus on collaborative approach to build solid relationships and develop mutually beneficial partnerships and opportunities with strong commitment across our team and with stakeholders.

Our team consists of highly experienced and talented group of local and international management team with extensive years of experience in the African mining industry. The management team is supported by a knowledgeable team of multicultural professionals in all aspects of mining.

Leone Rock Metal Group Company positions itself to be an internationally comprehensive enterprise integrating mining, processing, smelting and steel production company in Sierra Leone through our integrated Iron Ore supply chain from mine to steel.







Ever since the commencement of operation in Tonkolili Mine and the Railway and Pepel Port projects in March 2021, I have witnessed with great pleasure the great coordination of various teams from different countries and regions in realizing rapid transformation and advancement in production, processing, haulage and export of Iron Ore which has fast tracked sales revenue for the company and significant tax generation to the Government of Sierra Leone.

With high speed shown and many important milestones achieved during the past few months, we are now transforming to a more refined management with a clear target to better exploit the mines, further mitigate impact on the environment and bring more benefit to community in a balanced and transparent way. More measurable commitments will be taken to make economic performance and environmental, social performance go hand in hand and mutually reinforce.

To Maintain our competitive edge during market variation, the company is well positioned in undertaking project phase . the beneficiation plant that will optimize our ore from 57% Iron to 62%+ Iron content. This expansion is on our top agenda and gaining overwhelming momentum . With this achievement in place, it will increase our stake in the market accompanied by higher revenue, tax and employment.

Deeply rooted in Sierra Leone, we are here firmly determined and focused to build an internationally respected Iron Ore industry through safe and solid mining practic.





# President Bio Assures Leone Rock Metal Group of GoSL Fullest Support

03

President of the Republic of Sierra Leone, His Excellency Dr Julius Maada Bio has assured the management of Leone Rock Metal Group of Government of Sierra Leone (GoSL) fullest support towards achieving the company's vision and goals.



*President of Kingho Energy Group handing over a book to President Bio*

President Bio made this assurance during a courtesy visit on him at State House in Freetown by staff of the company who were led by the president of Kingho Energy Group, Colin Ding. During his response to the presentation by the Company's Director in the Office of the CEO and the statement by the Kingho Energy Group President, His Excellency President Bio said he was happy that the meeting brought everyone together to have a shared view on of the roadmap of the company in Sierra Leone. He expressed joy that Leone Rock Metal Group Company Limited has started very well and thanked the company for not disappointing him.



*President Bio making his statement*

President Bio emphasized that Government will do its parts to ensure that the programmes, vision and developmental aspirations of Leone Rock Metal Group are mutually beneficial. He expressed optimism that he would truly look forward to the stage when Sierra Leone will be a hub for the production of steel in the sub-region. Therefore, the President assured that GoSL will give it supports to the company so that the company will actualize it goals.

On the area of Corporate Social Responsibility (CSR), the President of the Republic further assured that GoSL stands ready to help the company and will always be there to give its support. He said he is hopeful that the pledges made by the company will be adhered to and that the roadmap of transforming the iron ore mining industry of Sierra Leone will be a vision achievable during his tenure as President.



*Kingho's President extending greetings to President Bio*

Meanwhile, the remarks of President Bio was a direct response to the statement made by the President of Kingho Energy Group, Colin Ding, who had earlier in the meeting spoke about the desire of the company to launch Phase II of its vision. Phase II, he said is to optimise the Tonkolili Iron Ore grade from 52% to more than 65% so that the company's product will be globally competitive.

Mr Ding thanked the President and GoSL for the relentless support given to the company so far and assured that based on the trust and confidence bestowed on Leone Rock Metal Group, the company will do all it could to transform the iron ore industry of the country.



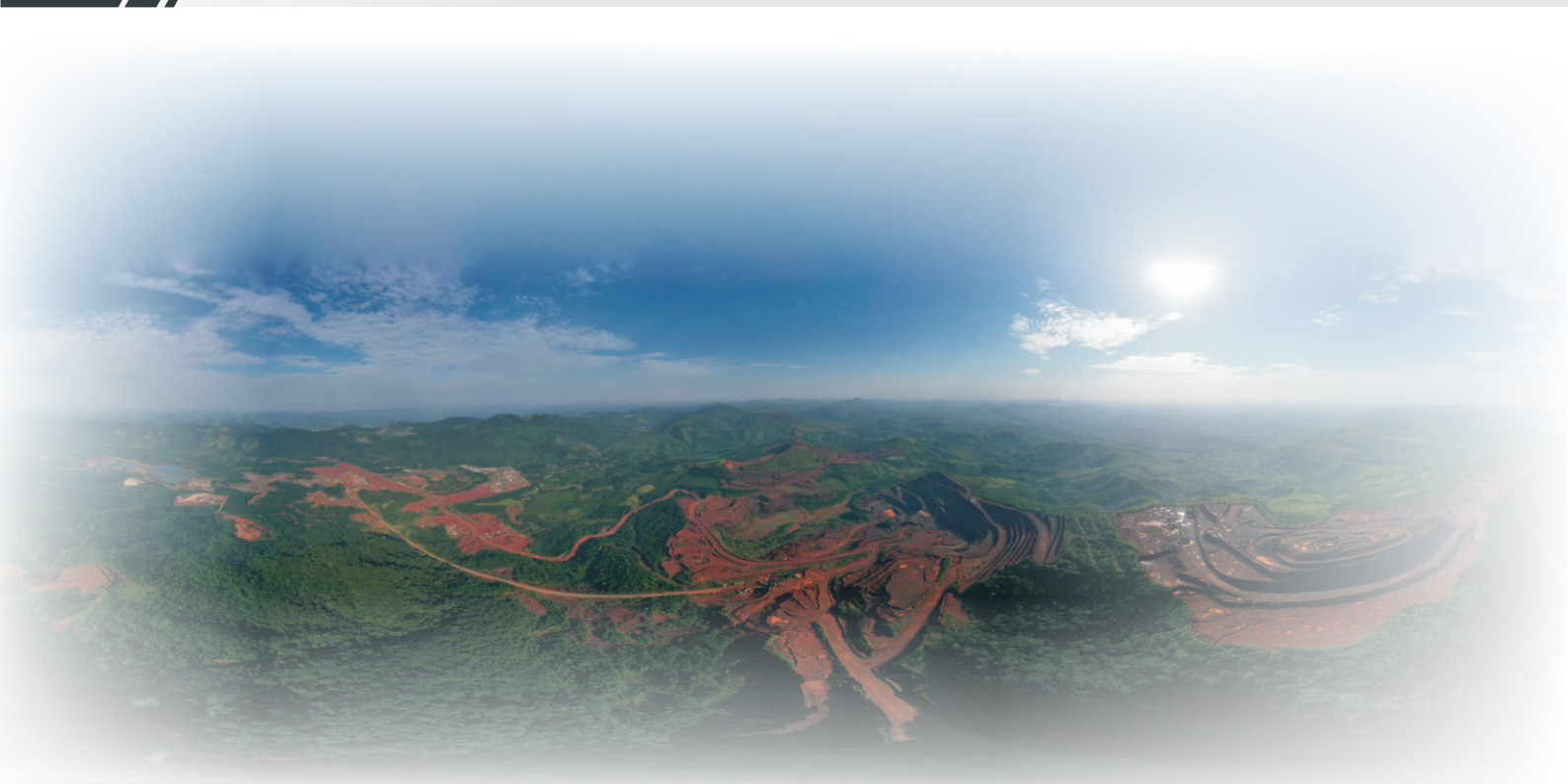
*President Bio and Kingho team*

Also, earlier, the Director of Corporate Affairs, Leone Rock Metal Group, Salim Sillah did a PowerPoint presentation in which he looked at the company's vision, mission, values, Human Resources and Human Capital Development strategies.

Director of Community Affairs, Leone Rock Metal Group, Madam Judith Kosseh presented the company's delegation. The meeting was also attended by the Chief Minister Jacob Jusu Saffa, Minister of Mines and Mineral Resources Musa Timothy Kabba, Minister of Finance Dennis Vandi, Attorney General and Minister of Justice Anthony Brewah, Director General National Minerals Agency Julius Daniel Mattai and several other government officials.



## Kingho Mining Company to optimise Tonkolili Iron Ore to Globally Competitive Grade



**Sunday 23rd May 2021/ Bumbuna Town, Tonkolili**

**District:** President of Kingho Energy Group, Colin Ding has promised to optimise the Tonkolili Iron Ore grade from 52% to more than 65% so that the company's product will be globally competitive.

Mr Ding made this statement during a community engagement ceremony held in Bumbuna Town, Dasogoia Chiefdom- one of the mining chiefdoms in the Tonkolili District of Sierra Leone. Whilst dilating, the Kingho head said "our visit this time is to reveal the Phase II of our project for the Tonkolili Iron Mine," adding that this phase of the project is going to involve



designing and building an optimization plant that will increase the grade and value of the Tonkolili Iron Ore from 52% to more than 65% Iron.

Mr Ding added that the designing and building of an optimization plant will be the first time in the history of the Tonkolili Mine that the Iron Ore mined will leave the mine with such a globally competitive grade. He said "Kingho is not here just to mine what we meet but we are also going to add value to what we mine right here in Sierra Leone."

In addition, the Kingho President assured that once this phase starts, the product the company export will have higher value and there will be more revenue coming to the Government of Sierra Leone and the 1% amount paid to the communities will also increase.

Against this backdrop, the Kingho President used the opportunity to thank the stakeholders for their patience during the challenges the company was faced with. He said "your support has provided comfort for us and increase our confidence to invest more and do more in terms of business development in the communities and increase our community development projects."

On his side, CEO of Leone Rock Metal Group Company Limited, Gilbert Zhao whilst making his



remarks assured that all of what Kingho has started doing in its operational communities is just the beginning. He said that Kingho's ambition is to grow stronger with the communities. He added that "the developments we will bring into your communities will benefit the youths, women and children as our community development support plans covers agriculture, health, education, water and sanitation."

Meanwhile, earlier on in the programme, Director of Community Affairs Company of Leone Rock Metal Group Company Limited, Madam Judith Kosseh whilst stating the purpose of the meeting said the company has done much in its three (3) mining chiefdoms of Dasogoia, Simiria and Sambaia and that they are gathered to showcase the various things Kingho has succeeded in bringing to the people of Tonkolili District.



Paramount Chief of Dasogoia Chiefdom who chaired the meeting and spoke on behalf of the people of the mining communities emphasized on the importance of the meeting with the mining communities. He said the decision of the Kingho President to come from China and deliberate with them shows that the interest of the people is at the heartbeat of Kingho's development programmes.



Biankay Bangura, one of the land owners from Simiria Chiefdom said that they are very optimistic that the model of community engagement Kingho has used will bring more people onboard including creating more job opportunities and empowering the people. He said he is hopeful that will benefit them the land owners. He said he is hopeful that Kingho will show difference for its previous predecessor companies.

Sierra Leone Police Local Unit Commander Tonkolili District, Alphonso A Fambulleh called on the people to always seek redress from the appropriate authorities. He called on people to never take things on themselves. However, he called on the company to go strictly by the mining industry regulations especially on issues regarding employment.



Several other stakeholders from all the three mining communities and the Tonkolili District spoke at the auspicious programme, which was accompanied by the symbolic handing over of the rehabilitated school at Kebbema Community to the Deputy Director of Education Tonkolili District and also the launch of the Women in Agriculture Project in all three mining chiefdoms. The programme was climaxed with traditional performances by the people who warmly welcomed the Kingho staff.



## Leone Rock Metal Group has, through its subsidiaries and contractors, has employed over 2,000 Sierra Leoneans as at September, 2021



A report published by the Human Resource Department of Leone Rock Metal Group in August 2021 has stated that the company and its two subsidiaries (Kingo Mining Company and Kingho Railway and Port Company) have employed a total of two thousand Sierra Leoneans between the period of October 2020-August 2021.

The report aims at highlighting areas of priority in relation to activities undertaken since the Government of Sierra Leone handed over the assets and facilities of the New Tonkolili Iron Ore Mines and the Railway & Port to Kingho as well as identifying key activities undertaken by the Human Resources Department and the performance of the Company in relation to progress made to kick start the project.

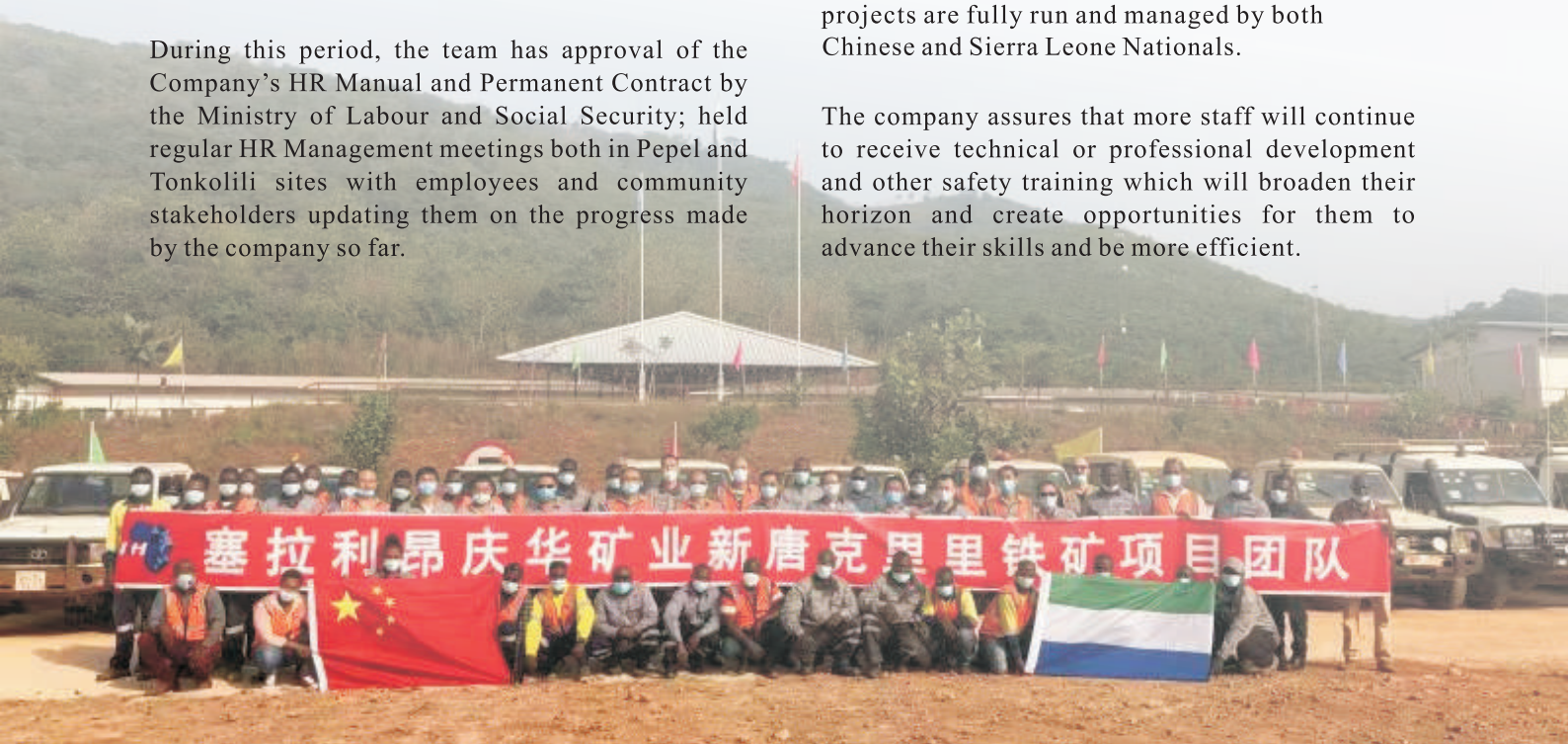
During this period, the team has approval of the Company's HR Manual and Permanent Contract by the Ministry of Labour and Social Security; held regular HR Management meetings both in Pepel and Tonkolili sites with employees and community stakeholders updating them on the progress made by the company so far.

Furthermore, the human resource oversees and maintains all the stages of the employment process: recruitment, interviewing, testing, background checks, selection and induction. Also, the company has constantly engaged in "on the job training" or mentoring to enable local staff take-over management of the company alongside their Chinese counterparts. This process has been in ensuring at this initial stage of the projects are fully run and managed by both Chinese and Sierra Leone Nationals.



The company assures that more staff will continue to receive technical or professional development and other safety training which will broaden their horizon and create opportunities for them to advance their skills and be more efficient. process has been in ensuring at this initial stage of the projects are fully run and managed by both Chinese and Sierra Leone Nationals.

The company assures that more staff will continue to receive technical or professional development and other safety training which will broaden their horizon and create opportunities for them to advance their skills and be more efficient.





# Leone Rock Metal Group's Compliance Unit is pushing towards the path of Corporate Standards

07

The Compliance Unit of Leone Rock Metal Group is under the office of the CEO and it is charged with the responsibility of helping the organization and its subsidiary vehicles to conduct operations in a safe, environmentally friendly and cost-effective manner, seeks to ensure that the company remains compliant with all associated statutory regulations.

## Highlights/Accomplishments

➤ **Health & Safety:** This aspect Superintended by the Safety Supervisor, held consultation programs (Toolbox talk, Prestart checks, safety meetings, etc.) for Kingho employees and Contractors.

➤ A daily alcohol check is conducted on workers for effectiveness and efficiency.

➤ **Environment:** Remedial works were also carried out around the waste oil bund walls & general housekeeping.

➤ **Operations:** With regards to this, we were able to liaised with site teams on mining, processing, haulage & other related processes with a view to optimize production and the entire pit – port process.

➤ **Illicit mining activities:** This was discovered within Kingho Mining concessions and was reported to the supervising Government Authorities accordingly for prompt action.

➤ **Site monitoring:** at TIO Mine Site, Railway & Pepel Port Yard. Site tour and assessment of all operational facilities including Processing Plant, Pit, Port Equipment and Dumping Sites.

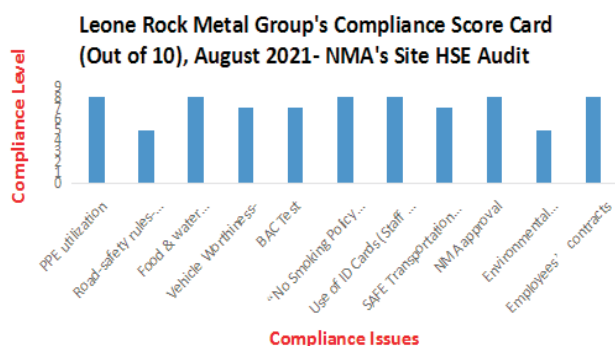


➤ **Trainings:** These were conducted on Mining Laws, Regulations & Operational Compliance at TIO Mine Site & Pepel Port Yard. It attracted Kingho Staff as well as Contractors & Sub Contractors.

➤ **Statutory reports:** Comprehensive reports are compiled and submitted to Government Agencies such as NMA & EPA for all Kingho Licenses. These included monthly production reports, 2nd quarter financial transparency reports, 2nd quarter environmental monitoring reports & safety incident reports.

➤ **HSE Committee:** Led by the HSE Manager & team at TIO, consisting of representatives from all Departments at Kingho Mining Company (KMC) & all Contractors, this committee was set up to oversee all safety protocols within their respective departments and work area.

➤ **Technical Support:** guidance on technical issues on various fronts generally provided by the Unit, yielded positive results as shown by the gradual improvement in HSE & general operational compliance and as accorded by NMA.



The Chart below shows a summary of Compliance Status (ranked out of 10) of KMC & its contractors as ranked by NMA's Chief Inspector of Mines after his team's HSE Site Audit earlier in August, 2021.



As a group, Leone Rock Metal Group takes community engagement. That is why it set up a specialist directorate to work closely with stakeholders and communities at large to ensure that our operations do not negatively affect their normal livelihood but also provide an opportunity for developments.

Based on the EPA statutory provisions, the company very recently developed a Community Development Action Plan (CDAP). In order to implement this, it organized training for our Community Liaison Officers (CLOs) covering all our areas of operations on planning and implementation of the CDAP Projects.



Over the past three months Leone Rock Metal Group has undertaken several projects in the subsidiary companies using Chiefdom based structure through the Chiefdom Representative Committees (CRC) set up in chiefdoms of operations. These chiefdoms are Simiria, Dansogoia and Sambaia in Tonkolili District and Kamasondo in Port Loko District.

With recommendations from the four CRC, Leone Rock Metal Group launched massive agriculture projects to support women farmers. This support comes at the time when the communities were preparing for this year's planting season. Assorted farm tools were provided to women in these chiefdoms. A lot of women farmers came out

in their numbers to show their support and appreciation. The farming tools will boost their livelihood and sustenance.

In addition, the subsidiary company, Kingho Railway and Port undertook rehabilitation and modernization of the only referral health centre in Kamasondo chiefdom. Consequent to the growing population as a result of the company operations in Pepel, hospital attendance has increased to about 300 patients per month, 30 deliveries and 20 admissions on average. The company also provided the Pepel Health Centre with mattresses and beddings.



Furthermore, the other subsidiary, Kingho Mining Company undertook the rehabilitation of a dilapidated school in Kegbema Community. The school is closer to the New Tonkolili Iron Ore (TIO) gate from Bumbuna was in a very bad shape and needed an urgent attention.

Also, the company has constructed a roundabout at Mabontho Town, the headquarters of Simiria Chiefdom. The significance of this project is to help control traffic and minimize accidents in the largest town in Simiria Chiefdom.

This is also accompanied with the construction of Culvert at main crossing drainages in Bendugu Town, the Chiefdom headquarters of Sambaia.





## Leone Rock Metal Group Takes Corporate Social Responsibility very seriously

09

Collectively, within the past three months, Kingho Mining and Kingho Railway and Port sponsored football galas in honour of Sierra Leone 60th Independence Anniversary in all its operational communities.

As part of its corporate social responsibility, Leone Rock Metal Group also did Ramadan food distribution in both Pepel and Tonkolili operational areas.



In joining government in the fight against the 2nd wave of coronavirus disease, the company embarked on sensitization and distribution of preventive kits to community in its operational areas at Pepel and Tonkolili.



In a bid to boost support to security sector in Sierra Leone, the company donated cements as a response to the turning of the sod for the construction of a Level 2 hospital at Teko Barracks, Makeni City. The hospital will support health delivery to military personnel in that part of the country.



The company also donated stationery materials to the Sierra Leone Police Congo Cross Division.



Company donated desktop, laptop, printers, CCTV camera and A4 paper to Cyber Crime Unit, CID, Freetown.



Individually, Kingho Mining Company also undertook the payment of our surface rents of 400 Million Leones to our three (3) mining communities, whilst Kingho Railway and Port Company undertook community sensitization, stakeholder engagement and conflict resolution in the Pepel Port area and all the railway corridor communities.



LEONE ROCK METAL GROUP

#### CONTACTS

PR & Media Unit

Leone Rock Metal Group

Add: 20 Signal Hill Road, Freetown

Tel: +232 77 227804, +23276792805

Email: [dbdul.malik.bangura@khgroupsl.com](mailto:dbdul.malik.bangura@khgroupsl.com)